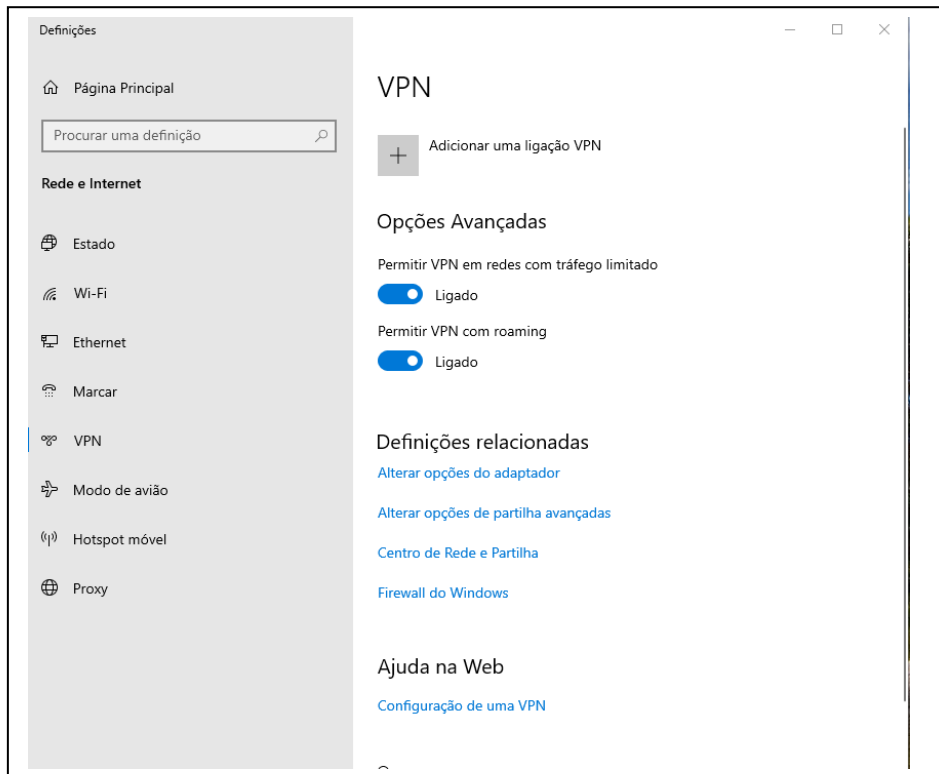


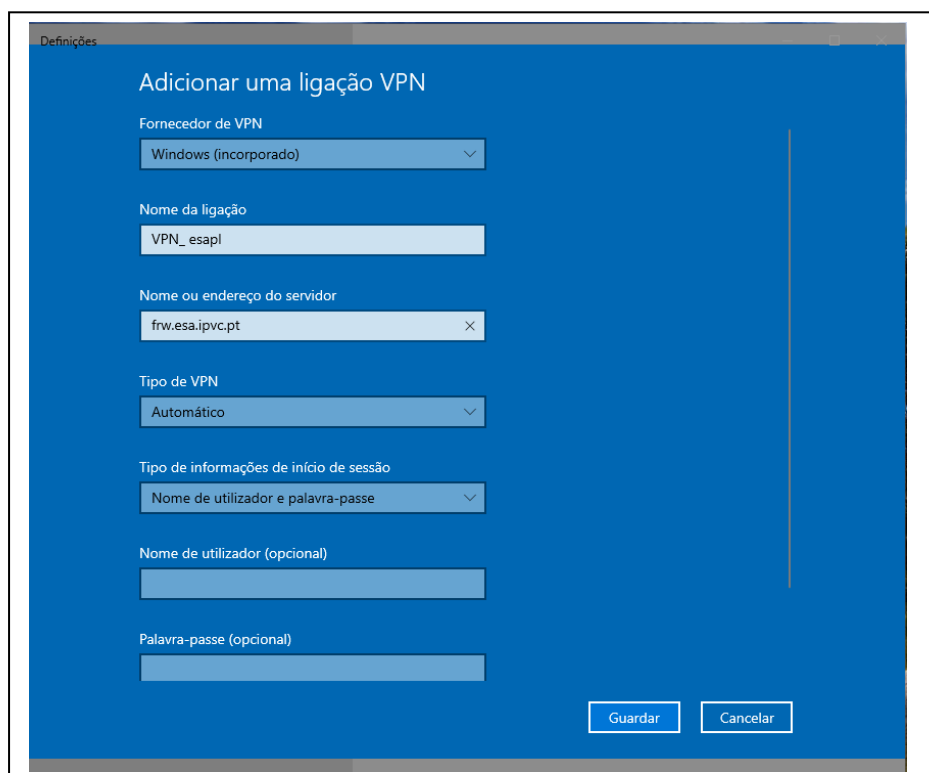
VPN ESAPL – Instruções de configuração Windows 10

1 - Abrir definições de rede e internet

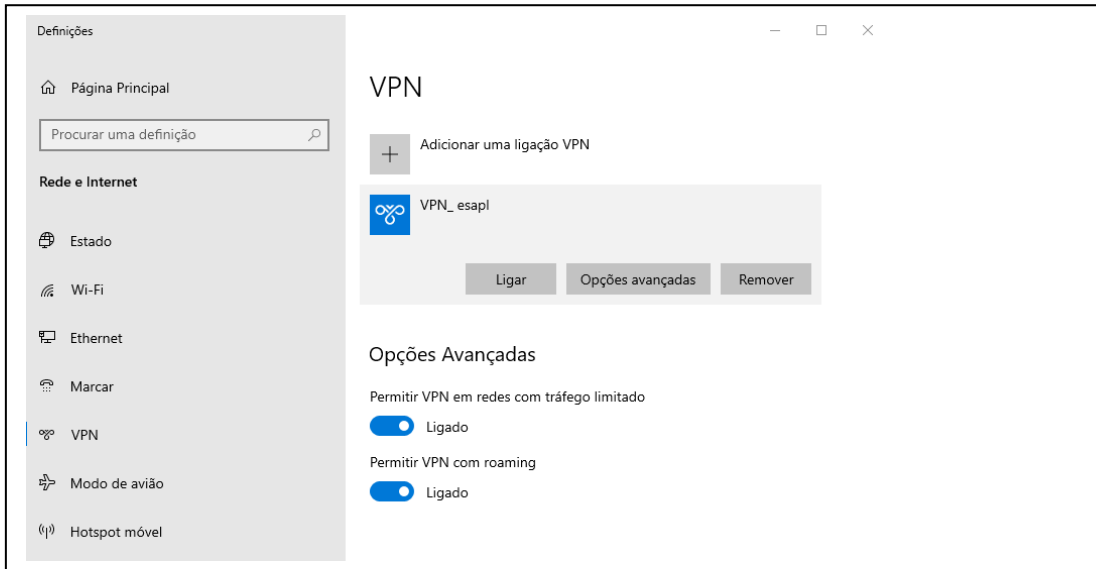
2 – Adicionar uma ligação VPN



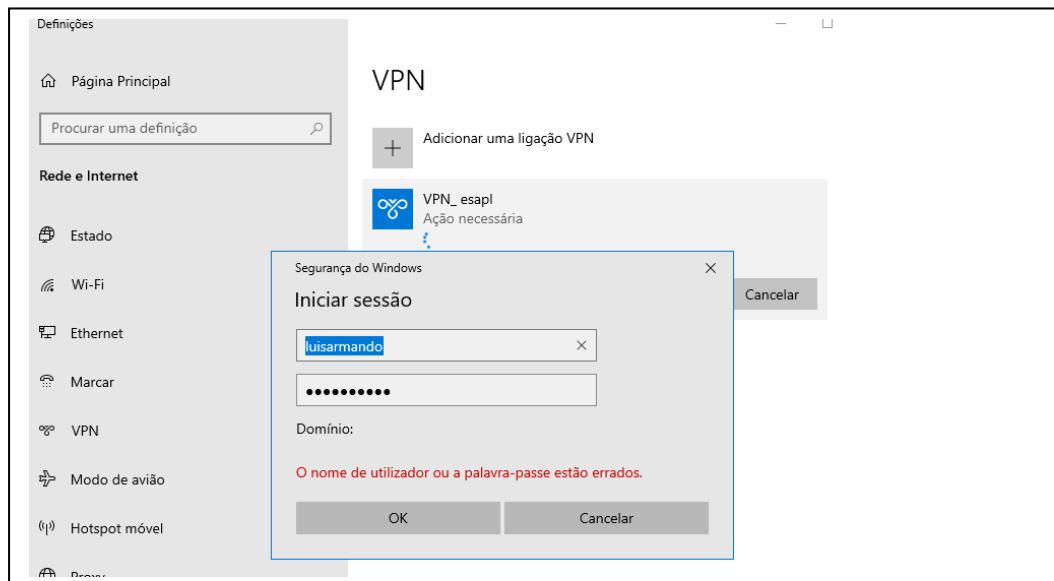
3 – Preencher os campos de acordo com a figura e **Guardar**



4 – Ligar VPN_esapl



5 – Iniciar sessão com as suas credenciais de acesso



6 – VPN_esapl Ligado

